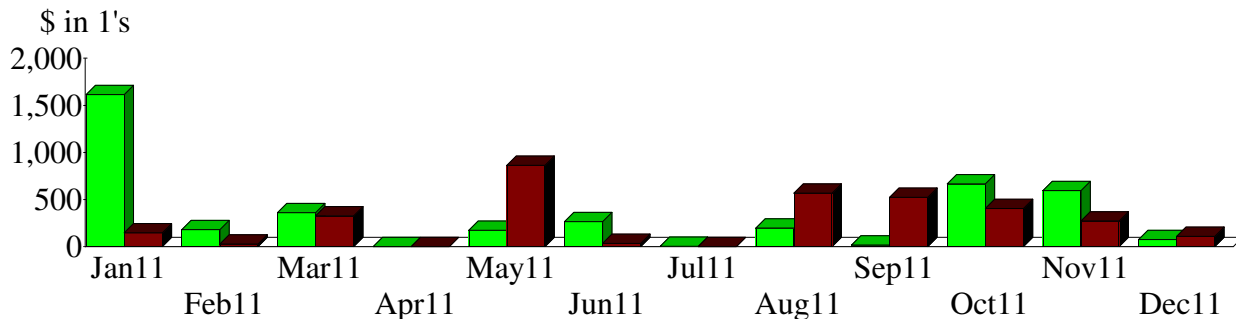
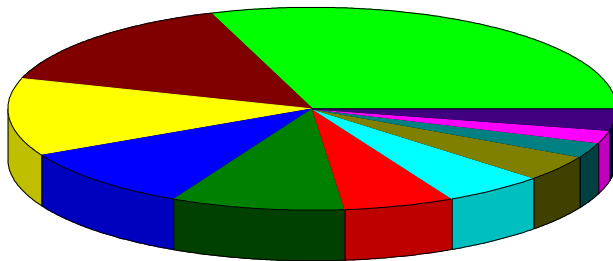


Income and Expense by Month January through December 2011



Expense Summary January through December 2011



By Account

Scholarship	%30.42
Group meetings	14.85
Bulletins	12.44
Insurance	9.95
Rent	9.37
Membership/Treasurer	5.98
Website	5.42
Association fees	4.26
Secretary	2.55
PO Box rent	2.13
Other	2.63
Total	\$3,287.05